



BIDEYE

A MILESTONE + SATEL
plugin

developed by
AXIANS



The background of the slide is a vibrant blue and purple gradient. It is filled with numerous glowing, star-like points of light and thin, radiating lines, creating a sense of a dynamic, high-tech network or data flow. In the lower right quadrant, a close-up of a network cable plug is visible, its metallic contacts and plastic housing rendered in a semi-transparent style that blends with the background's color scheme.

axians

BIDEYE PLUGIN

BIDEYE Plugin

Axians Italy has developed a solution, first of its kind on the market, which allows the integration of SATEL Intrusion Detection units with Milestone Video surveillance solutions.

This solution stems from the need to combine the Milestone's capability to integrate third-party systems through its powerful MIP (Milestone Integration Platform) engine, with the versatility of SATEL plants in order to create a single control panel environment which complies with strict safety requirements, able to reach large, extensive sites without a control panel in a given territory.

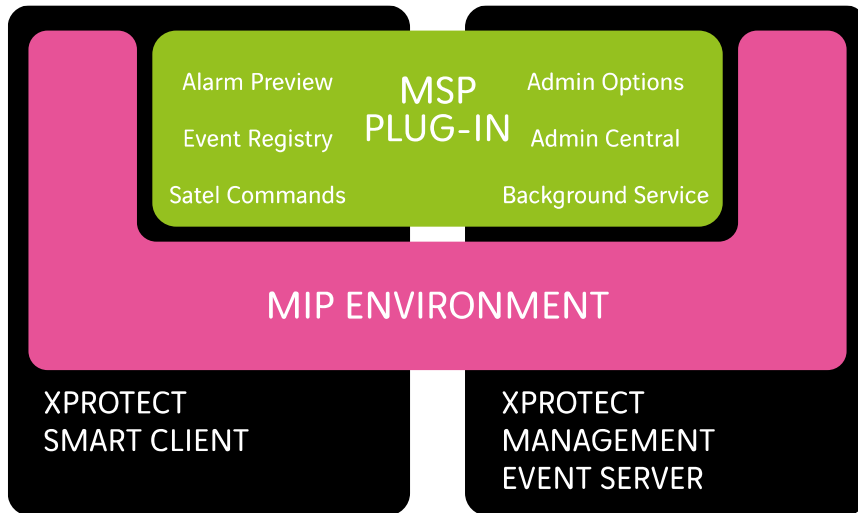


BIDEYE Milestone Plugin

Thanks to Milestone's native management of federation and the ability of the plugin created by Brand id to manage it, it is now possible to merge all events/alarms from the various SATEL INTEGRA control panel, thus "transforming" them as Milestone native events.

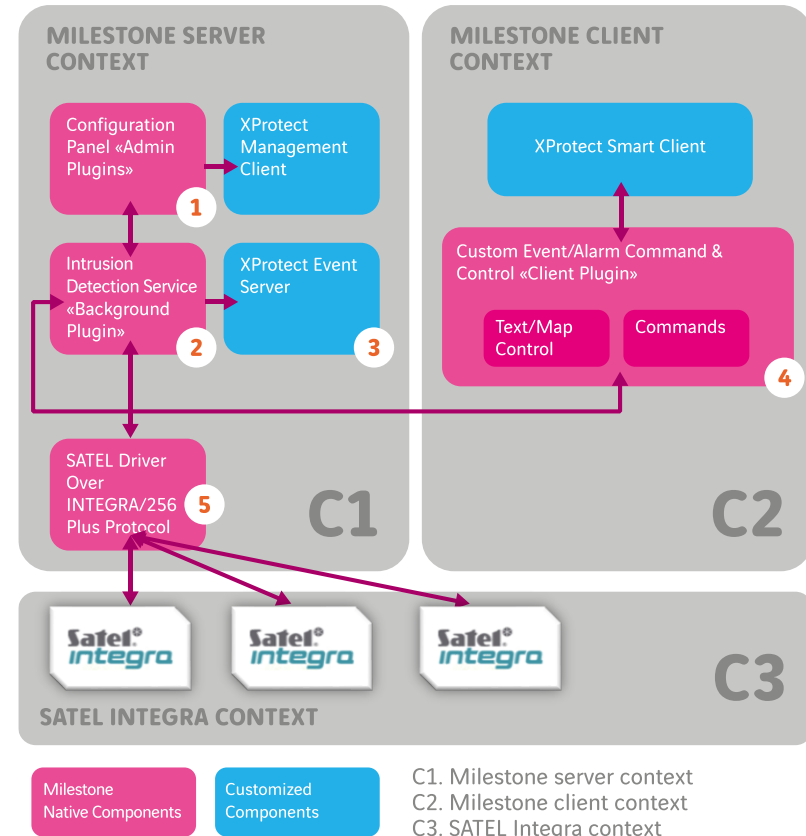
Once it has become a «native event», the event/alarm of the SATEL INTEGRA control panel can be used to trigger alarms, activate further events and/or complex management logics.

The Axians Italy solution, moreover, allows the easy and intuitive production of standard or ad-hoc written reports.



BIDEYE Architecture

1. Configuration plugin that runs in Management Client developed for configuration purpose.
2. Integration core plugin that controls SATEL control panel and create/modify/delete Milestone native events.
3. Plugin reads Satel events/alarms and generates native Milestone events that pushes to Milestone Event Server.
4. In the Milestone Smart lives client plugins that controls control panel by text and map components.
5. SATEL/Integra driver that implements integration protocol commands. Currently we support firmware version ETHM-1 Plus v2.05 2018-07-06 and later.



BIDEYE Implemented Satel commands

Command	Code	Package
List of new data in above cmds	0x7F	Standard
INT-RS/ETHM-1 module version	0x7C	Standard
Read device name	0xEE	Standard
Read Event	0x8C	Standard
Get event text	0x8F	Standard
Zones Violation	0x00	Standard
Zones Tamper	0x01	Standard
Zones Alarm	0x02	Standard
Zones Tamper Alarm	0x03	Standard
Zones Alarm Memory	0x04	Standard
Zones Alarm Tamper Memory	0x05	Standard
Zones Bypass	0x06	Standard
Zones No Violation Trouble	0x07	Standard
Zones Long Violation Trouble	0x08	Standard
Zones Isolate	0x26	Standard
Zones Masked	0x28	Standard
Zones Masked Memory	0x29	Standard
Output State	0x17	Standard

Command	Code	Package
Arm in mode 0	0x80	Silver
Disarm	0x84	Silver
Clear alarms	0x85	Silver
Zones bypass	0x86	Gold
Zones unbypass	0x87	Gold
Output On (anche da regole Milestone)	0x88	Gold
Output Off (anche da regole Milestone)	0x89	Gold
Read users list	0xE2	Platinum
Read self-info	0xE0	Platinum
Read User	0xE1	Platinum
Troubles*	0x1A...0x1F 0x2C...0x2D	Platinum
Troubles Memory*	0x20...0x24 0x2E...0x2F	Platinum
Users Management	0xE1...0xE7	Platinum

More commands will be implemented in the future.

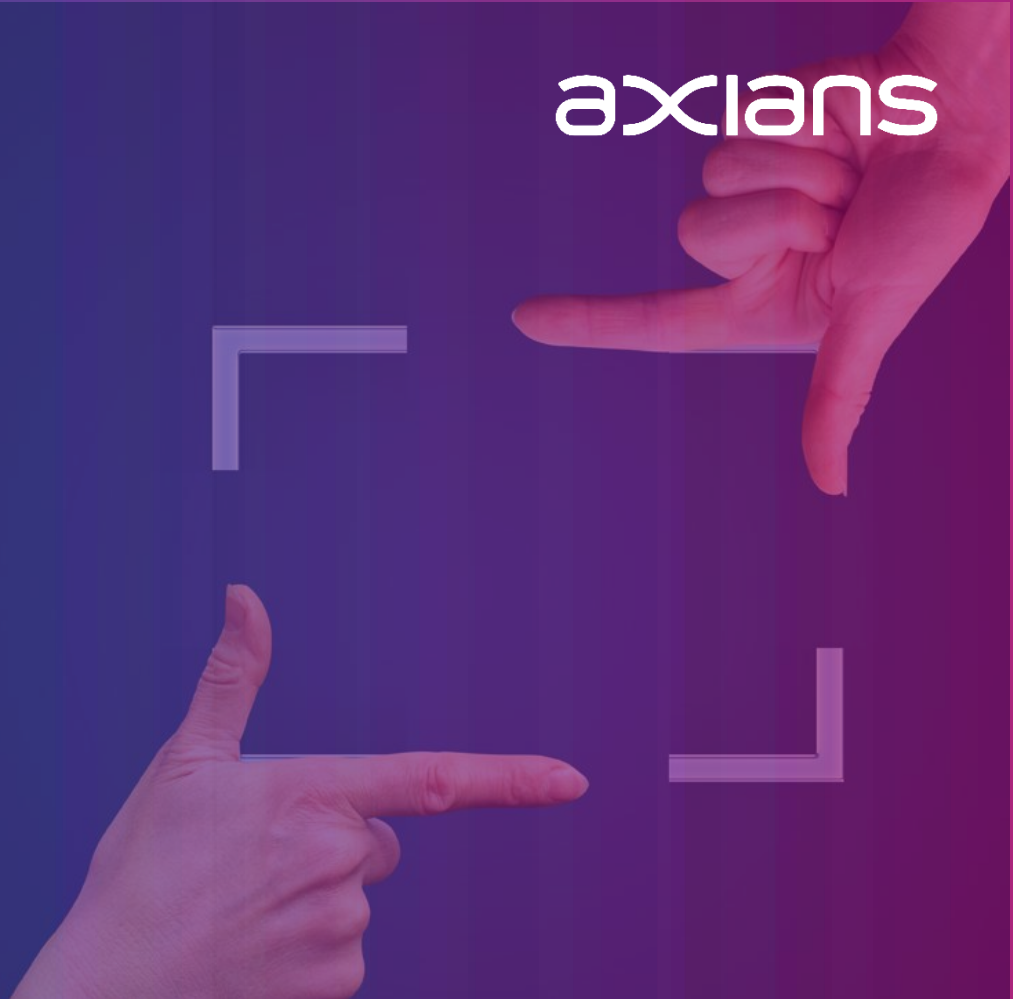
*Available from June 2021

BIDEYE Features

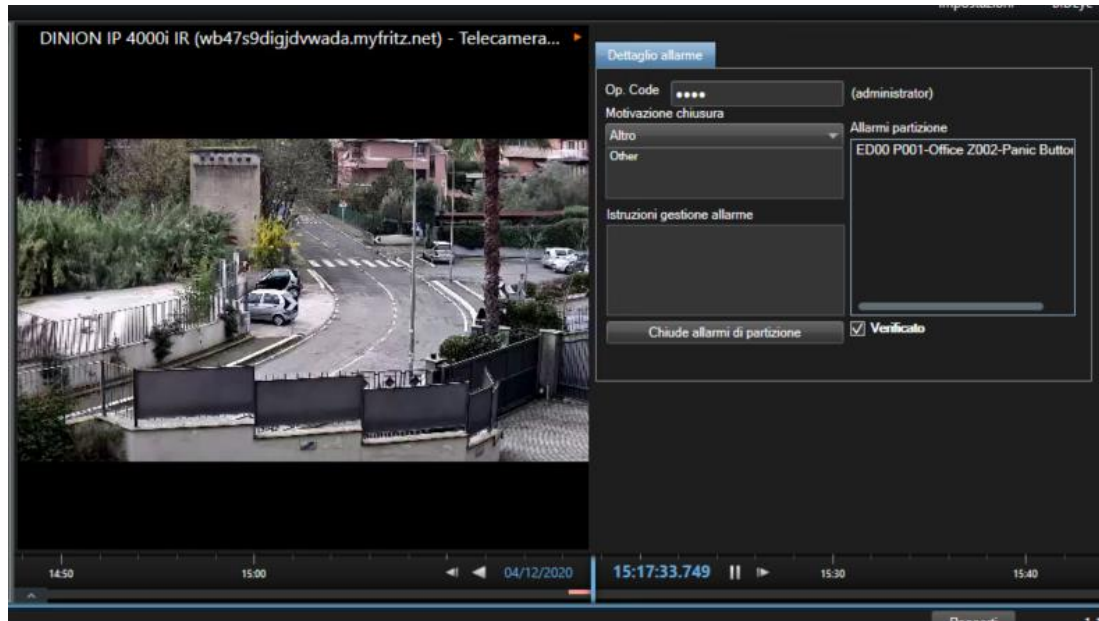
Features	Plugin	Description
Multi control panel support	BIDEYE BACKGROUND	Every installation can manage multi control panel Satel.
Milestone Federation	BIDEYE BACKGROUND	Native support for FMA (Federation Milestone Architecture).
SATEL events configuration	BIDEYE ADMIN	Customer can configure SATEL events by single/multi granularity to reduce Event Server load.
Full configurability	BIDEYE ADMIN	Customer can configure all parametry by Milestone Management Console.
Events Control	BIDEYE BACKGROUD	All configured SATEL events are monitored and, if activated, pushed in Milestone Event Server.
Events Command	BIDEYE BACKGROUND BIDEYE ALARM PREVIEW	Customer can arm and disarm partitions, close alarms, bypass and unbypass zones directly from Milestone Smart Client.
Custom reports	BIDEYE REPORT	Customer can show costum report directly from Milestone Smart Client. Our solution use opensource Jasper Server as report repository.
Visual Map representation	BIDEYE MAP	Customer can show custom and manage SATEL event directly from Milestone Map. The zones and partitions are configured by BIDEYE ADMIN.
Users Management	BIDEYE USERS	Customer can add/delete/modify SATEL users directly from Milestone Smart Client.
I18N Support	ALL	Internationalization. At the time, Italian and English supported.

axians

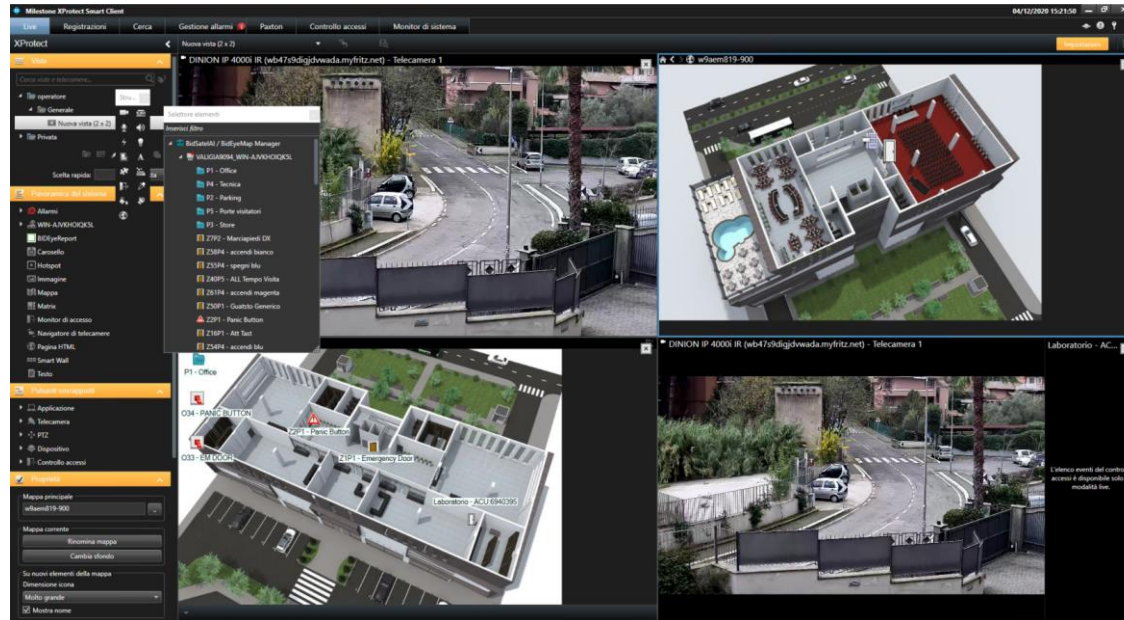
SOME
SCREENSHOTS



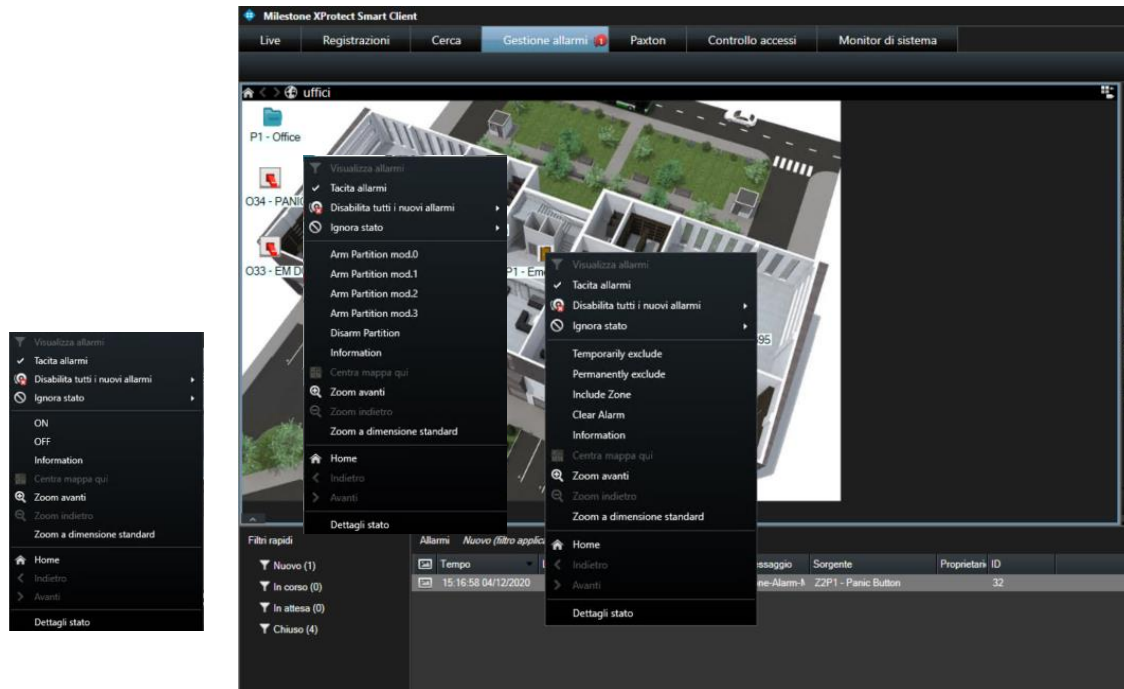
Alarm preview and closing form



Map representation



Map commands



View of Reports

Reports disponibili

Configurazione-SATEL - Report che estrale la configurazione delle centrali SATEL.

Customers Report - Customers Report

Export allarmi - Esporta gli allarmi SATEL

Map Report - Map Report

Table Report - Table Report

Lista filtri

22/08/2019

23/08/2019

Tutte

Tutte

☒ Pdf

☐ Excel

☐ Word

☐ Html

\bideye\reports\Customers Report-2019-08-05.pdf

\bideye\reports\Configurazione-SATEL-2019-08-05.pdf

Esegui

[Premere qui per visualizzare il report](#)

Configuration Management Client controls panels, zones, partitions, outputs

The screenshot displays the Milestone XProtect Management Client 2020 R3 interface. The left sidebar shows the 'Site Navigation' tree with the 'Configuration Management Client' section expanded. The main window is divided into several panes:

- Controller Information:** Shows details for the 'VALGIA90M_WIN-AJUK' controller. It includes fields for ID, Control name, IP Address, and a 'Test' button. The 'Central State' is 'Not connected'. The 'Poling (ms)' is set to 1000. The 'Admin tools' section includes 'Remove item by GUID' and 'Remove all map items' buttons.
- Partitions Table:** A table listing partitions for the selected controller. The table has columns for Partition ID, Partition Number, Partition name, Creation date, and Last modified date.
- Partitions Table Data:**

Partition ID	Partition Number	Partition name	Creation date	Last modified date
1	1	Office	17/11/2020 23:06	25/11/2020 11:59
1	2	Parking	17/11/2020 23:06	25/11/2020 11:59
1	3	Store	17/11/2020 23:06	25/11/2020 11:59
1	4	Technica	17/11/2020 23:06	25/11/2020 11:59
1	5	Poste violator	25/11/2020 11:25	25/11/2020 11:59
- Zone Information:** A pane on the right showing details for the 'ZP1 - Panic Button' zone. It includes fields for Name and Zone.

Configuration Management Client User Satel

Controller Information

FillBy

Enabled ☐

ID: 1 Plugin License State: **Active**

Central name: VALIGIA9094_WIN-AJWQHIOKSL

IP Address: wb47s9dgdvreads.myfritz.net 9094

Test

Central State: **Not connected**

Central ETHM firmware version: N/A

Poling (ms): 1000

☒ Control ☒ Command ☐ Satel Read Events

Admin tools:

Remove Item by Guid Remove all map items

Authorization (username)

Closing reason:

Synchronization SATEL Station

Sync Satel Zone/Partitions/Outputs

Use the "Sync Satel Central Zone / Partition" command to synchronize the zones / partitions / outputs with the satel station with the local database and generate the corresponding ICONS. Warning: this can take several minutes. Erase commands can be used to remove data from the system.

Information

Partitions Zones Outputs Groups Manage Users Read Events Scheduler

Operator Code: **** Load Loading user 8 of 8.

Number	Name	Type	Duration	Code
1	Adm Integrum	0: Normal		****
2	Arm GPG	0: Normal		****
3	test1	0: Normal		****
4	test2	0: Normal		****
5	Antonio	0: Normal		****
6	Uscite	0: Normal		****
7	Isiaco	0: Normal		****
8	Paxton	0: Normal		****
*		0: Normal		
		1: Single		
		2: Time renewable		
		3: Time not renewable		
		4: Duress		
		5: Mono outputs		
		6: B outputs		
		7: Partition temporary blocking		
		8: Access to cash machine		
		9: Control		
		10: Schedule		

Partitions User Rights Locks

- ☐ 0 -> arming
- ☐ 1 -> disarming
- ☐ 2 -> alarm clearing in own partitions
- ☐ 3 -> alarm clearing in own object
- ☐ 4 -> alarm clearing in whole system
- ☐ 5 -> arm deferring
- ☐ 6 -> code changing
- ☐ 7 -> users editing
- ☐ 8 -> zones bypassing
- ☐ 9 -> clock setting
- ☐ 10 -> troubles viewing
- ☐ 11 -> events viewing
- ☐ 12 -> zones resetting
- ☐ 13 -> options changing
- ☐ 14 -> tests
- ☐ 15 -> downloading
- ☐ 16 -> can always disarm
- ☐ 17 -> voice messaging clearing
- ☐ 18 -> GuardX using
- ☐ 19 -> access to temporary blocked partitions

Save

Configuration and events selection

The screenshot displays the Milestone XProtect Management Client 2020 R3 interface. The left sidebar shows a tree view of the system configuration, including Cameras, Microphones, Speakers, Metadata, Input, Output, Client, Smart Wall, View Groups, Smart Client Profiles, Management Client Profiles, Main, Rules and Events, Time Profiles, Notification Profiles, User-defined Events, Analytics Events, Generic Events, Security, Roles, Basic Users, System Dashboard, Current Tasks, System Monitor, System Monitor Thresholds, Evidence Lock, Configuration Reports, Server Logs, Metadata Use, Metadata Search, Access Control, Transaction, Transaction sources, Transaction definitions, Alarms, MIP Plug-ins, BIDEYE, Controllers, Partitions, Zones, and Outputs.

The main window is titled "Controller Information" and shows the configuration for a controller named "VALGIA9094_WIN-A/V/K". The "Enabled" checkbox is checked. The "ID" field contains "1". The "Central name" field contains "VALGIA9094_WIN-A/V/K". The "IP Address" field contains "wb475". The "Polling (ms)" field contains "1000". The "Admin tools" section includes a "Remove Item by GUID" button. The "Information" section includes a table with the following data:

Number	Name
1	Adm Int
2	Arm GF
3	test1
4	test2
5	Antonio
6	Ulcote
7	loaconc
8	Paxton

The "Events to manage" section is open, showing a list of events to be managed. The "Enable Events" checkbox is checked. The "Enable Grouped events" checkbox is unchecked. The "Service admin op code" field is empty. The "Events to manage" list includes:

- Zone-Violation
- Zone-Tamper
- Zone-Alarm
- Zone-Tamper-Alarm
- Zone-Alarm-Memory
- Zone-By-Pass
- Zone-Long-Violation-Trouble
- Zone-Isolate
- Zone-Masked
- Zone-Masked-Memory
- Outputs-State

The "Closing reason" field is empty. The "Use the 'Sync Set Central Zone / Partition' command to synchronize the zones / partitions / outputs with the set station with the local database and generate the corresponding ICONS. Warning: this can take several minutes. Erase commands can be used to remove data from the system." text is displayed. The "Partitions" section is also visible, showing a list of partitions with checkboxes for "arming", "disarming", "alarm clearing in own partitions", "alarm clearing in own object", "alarm clearing in whole system", "arm deferring", "code changing", "users editing", "zones bypassing", "clock setting", "troubles viewing", "events viewing", "zones resetting", "options changing", "tests", "downloading", "can always disarm", "voice messaging clearing", "Quadrant using", and "access to temporary blocked partitions".

BIDEYE Licensing

Package	Description
BIDEYE-GAMG	Alarm monitoring from Satel Integra. Arm & Disarm Partitions and Clear Alarms, Map management, Export of PDF of SATEL event log, Zone management even if not alarmed, Bypass zones (temporary and permanently), Unbypass zones, includes Trouble cancellation*, Output activation, Output deactivation, Forced activation, and capabilities to use User Event to command SATEL outputs directly by native Milestone Rules engine. Includes 1 year corrective software maintenance(updates, patches, bug fixing)
BIDEYE-PAMG	Includes what is included in the Gold version + management of some alarms coming from Satel (includes Reading user data, Reading user list, Reading user lock, Reading user unlock, User deletion, User creation, User modification).
BIDEYE-MGP1Y	Corrective maintenance 1 additional year of BidEye software in Gold, Platinum versions.
BIDEYE-MGP2Y	Corrective maintenance 2 additional year of BidEye software in Gold, Platinum versions.

* Available from June 2021

Assistance		
Package	Description	Price
BIDEYE-AGPR	Remote activation of BidEye software in Gold and Platinum versions	On Demand
BIDEYE-AGPO	Activation of BidEye software in Gold, Platinum versions on-site	On Demand



axians

CONFIRMATION OF
COMPATIBILITY

Milestone Verified



Milestone Verified

Confirmation of Compatibility

Partner: BrandId

Partner Product: BIDEYE 2.1

Milestone Product XProtect®: *XProtect Corporate 2020 R2*

Date of Verification: 26/08/2020



The background of the slide is a photograph of a man and a woman in a modern office environment. The woman, with blonde hair, is holding a laptop and looking at the screen. The man, with a beard, is standing next to her, also looking at the laptop. They are both smiling. The office has large windows, modern furniture, and a warm, inviting atmosphere. The text is overlaid on this image.

axians

Do you have any questions? Do not hesitate to
contact us!

Sauro STRACCALI

sauro.straccali@axians.it

Senior Tecnical Advisory
Consultant – Axians Center
South Italy

Antonio LOIACONO

antonio.loiacono@axians.it

Senior Technical Advisory
Consultant – Axians Center
South Italy

Luigi DELLA MONICA

luigi.dellamonica@axians.it

Software and analyst
developer consultant –
Axians Center South Italy

CONTACT

Via Tevere, 44
00198 Roma

Via Gallarate, 205
20151 Milano (MI)

Tel.: +39 06 85358914

info-bideye@axians.it

www.axians.it

Thanks